

Installing the Trigger Guard

To install the trigger guard you'll need the rifle bench block, the front sight bench block, a ballpeen hammer and a number 4 roll pin holder and punch.

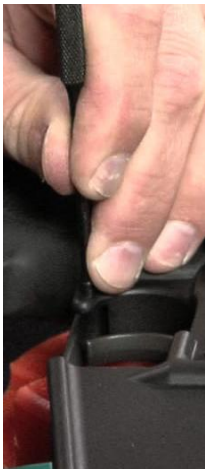
1. Place your lower receiver on the bench block with the right side facing up. Use the front sight bench block or some other solid block, to support the left side trigger guard pin extension. It is very important to support the left side trigger guard pin extension. Driving the trigger guard pin in without support can break the extension and ruin your lower receiver.



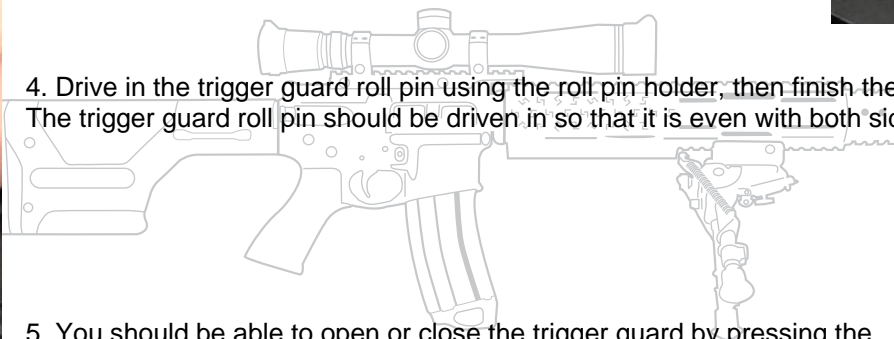
2. Place your trigger guard in between the holes in front of the pistol grip with the trigger guard detent towards the front of the rifle and facing the right.



3. Depress the detent to lock the front of the trigger guard into the receiver.



4. Drive in the trigger guard roll pin using the roll pin holder, then finish the installation with the roll pin punch. The trigger guard roll pin should be driven in so that it is even with both sides of the receiver.



5. You should be able to open or close the trigger guard by pressing the plunger on the right hand side of the rifle.



6. You have now completed the assembly of the lower receiver and now it's time to move on to the buttstock.